



# EnviroView

Earth-Friendly Solutions

EARTH-FRIENDLY WINDOWS FOR A BETTER WORLD







*Today's homeowners are "building green" by choosing products that make their homes energy-efficient, healthier to live in, and better for the environment.*

*Smart choices today are leading the way for a brighter tomorrow ...*

#### **INNOVATION BY DESIGN**

Precision-engineered for enduring beauty and exceptional performance, EnviroView Windows offer a variety of design solutions to achieve energy conservation and economy of natural fuel resources. These powerfully built windows are rigorously tested for structural integrity and thermal quality, and consistently meet or exceed nationally recognized and accepted AAMA, ASTM and NFRC standards.

#### **CHOOSING WINDOWS WISELY**

For many people, the motivation to replace their windows is painfully obvious: the windows are difficult to operate, are drafty and leaking air and are in need of painting or repair. While beauty, durability and easy operation are key considerations in choosing the best replacement window, a new priority has emerged – maximum thermal efficiency and energy conservation.

**Increased thermal efficiency** results in lower consumption of fossil fuels and at the same time reduces CO<sub>2</sub> emissions. It's good for you and good for the environment.

## Built to Last!

## All Vinyl Windows Are *Not* Created Equal.

At first glance, you may think all replacement windows are basically built the same. But take a closer look and you'll see substantial design upgrades that make EnviroView a pleasure to open everyday.

### FUSION-WELDED SASH AND FRAME WITH THE ACTIVATOR POLYMERIC FORMULA

Constructed with premium raw materials for superior strength and precision sealing at joints, this premium-grade formula delivers outstanding beauty and durability.

- Won't chip, peel, crack or warp; non-porous and stain-resistant
- Multi-chambered design provides increased thermal efficiency
- Impact-resistant for structural stability
- Low maintenance – never needs to be painted
- Narrow siteline design allows for optimum glass exposure

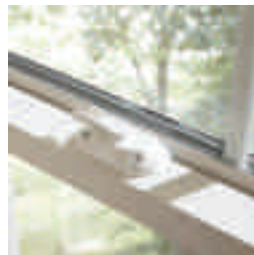


### TRUE SLOPED SILL



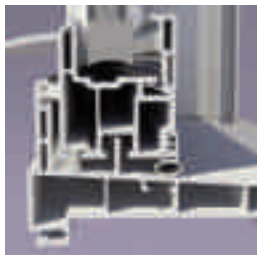
The true sloped sill is expertly crafted to provide a highly efficient drainage system that promotes water runoff without the use of weep holes.<sup>1</sup>

### SECURE LOCKING SYSTEM



Seals windows tightly shut for increased thermal efficiency and peace of mind.

### SASH-TO-SILL INTERLOCK



Traditional sloped sill designs can allow the sash to bow during powerful winds. With sash-to-sill technology, the sash is channeled firmly into the window frame for a unified wall of strength.

### ADDITIONAL FEATURES

- Constant force balance system ensures smooth, easy window operation
- Non-conductive, composite reinforcement in the meeting rails allows for secure mounting of hardware and improves energy efficiency.<sup>2</sup>
- Multi-layer weatherstripping helps block air, water and dirt infiltration
- Extruded mitered screen achieves superior form and function
- Double night latches provide a limited and secure opening of the window for ventilation

<sup>1</sup>For larger size windows or to meet specific DP/PG ratings, optional weeps/performance package must be ordered.

<sup>2</sup>Double-hung base model will automatically be upgraded to ST (steel reinforcement) for all units ordered in excess of 48" wide or 78" high.

## Activator 12 Insulated Glass Package.

# Multi-Layered Science Provides Unsurpassed Energy Savings While Maintaining Clarity.

### ENERGY-CONSERVATION GLASS

Did you know that windows and doors are the primary sources of energy loss in a home, with 70% of heating and 46% of air conditioning escaping from these areas? Windows are approximately 80% glass, so choosing an insulating glass package that prevents energy loss will help protect your home from absorbing outdoor heat in the summer and losing indoor heat during the winter.

### ACTIVATOR 12

Activator 12 Low-E glass is coated with multiple microscopic layers of metallic coatings to achieve maximum year-round energy savings, while minimizing the damaging UV rays that cause carpets and furnishings to fade.



*Activator 12 Low-E glass filters long-wave radiation from the sun, which reduces solar heat gain and keeps your home cooler in the summer.*



*In winter months, Activator 12 Low-E glass lets warm solar rays into your home while blocking the indoor heat from getting out.*

### GET THE ACTIVATOR ADVANTAGE



For the ultimate in energy savings, choose EnviroView Windows with the Activator 12 insulated glass package featuring Low-E glass, Polycomposite spacer system and NSArgon gas.

#### Activator 12 Low-E Glass

- Advanced Low-E glass
- Up to 40% more energy-efficient than many other Low-E or Mid-E glass systems
- High R-value (resistance to heat flow) for year-round comfort
- Blocks 70% of both UVA and UVB rays
- Maximizes daylight beauty

#### Activator PolyComposite Spacer System

- Combines multiple components – aluminum, foam, steel and polycarbonate – for low conductivity
- TempFlexible
- Supports double-strength glass
- Helps reduce condensation

#### Activator NSArgon

- Odorless, colorless, safe inert gas between the panes of glass
- 30% heavier than air for increased insulation
- Reduces heat transfer and deadens noise infiltration
- Vacuum-filled insulating glass units
- Polyisobutyl sealed units for gas retention



Activator 24.

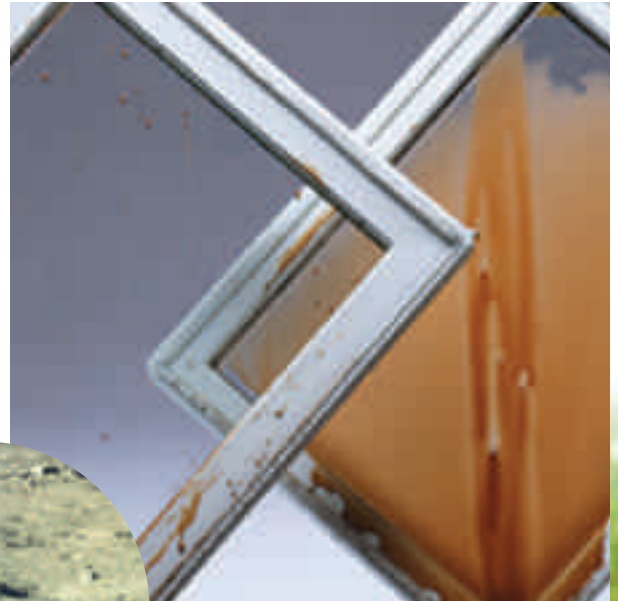
## EnviroView 24-Hour Window Washing Service.

### EASY UPKEEP WITH STAY CLEAN/EASY CLEANING GLASS



EnviroView Windows with Activator 24 Stay Clean/Easy Cleaning Glass will work round the clock to help keep your view sparkling clear. This innovative transparent coating on the glass, applied during the manufacturing process, is energized by UV rays to help slowly break down and loosen organic dirt. Water then glides evenly over the glass surface instead of beading, allowing the sheeting action to flush the surface clean and accelerate drying time with minimal spotting or streaking.

*Activator 24 Stay Clean/Easy Cleaning Glass coating creates a smoother surface to help repel dust and dirt.*



*The surface of normal glass is not as it appears to be. It is actually an uneven, rough surface, much like that of the surface of the moon.*



## EnviroView Windows ...

# Improving Your View and the World Around You.

Combining the best in beauty, durability and energy efficiency, EnviroView is the window of choice for homeowners who want to leave a smaller "environmental footprint" on the earth.

- Performance-engineered for energy conservation
- Award-winning quality and value
- Nobel Prize award winning polymetric construction
- Heavy-duty design for superior durability
- Exceptional insulation properties for thermal efficiency
- Advanced Low-E glass
- Unsurpassed energy savings
- Narrow siteline for optimum glass exposure
- Classic style with architectural detailing
- Decorative grid and glass options available
- Industry-leading warranty for added peace of mind

### A LIFETIME OF PROTECTION

EnviroView Windows carry a lifetime limited warranty – further assurance of lasting performance, superior quality and excellent value.

For complete warranty information, including limitations, ask your dealer for a copy of the EnviroView replacement window warranty.



**INCREASE YOUR ENERGY SAVINGS • REDUCE YOUR "ENVIRONMENTAL FOOTPRINT"**

*Ask about our "Apples to Apples" lowest price assurance!*

  
Replacement Windows

